

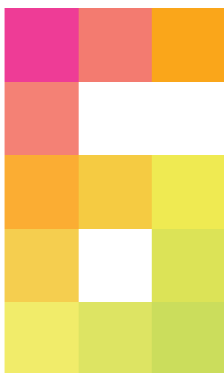
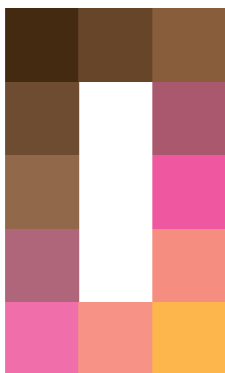


The Tranz Metro Day-by-Day Festival Guide



**New Zealand
International
Arts Festival**
24 Feb - 19 Mar

www.nzfestival.telecom.co.nz



Sit back
and let us
provide the
entertainment.



Only at SKYCITY will you find everything you need to entertain you. SKYCITY is proud to be a gold sponsor of the NZ International Arts Festival and an exclusive sponsor of the 'Earth from Above' exhibition.

www.skycity.co.nz



GOLD SPONSORS



CLEMENGER BBDO



Communications Provider



CORE FUNDERS



MAJOR GRANTS

The Community Trust of Wellington

New Zealand Community Trust

New Zealand Major Events

Lion Foundation

PRINCIPAL SUPPORTER

Friends of the Festival

SILVER SPONSORS

The National Bank

Victoria University of Wellington

Newstalk ZB

Wellington Waterfront Ltd.

Transpower

Sauce

The Dominion Post

Stagecoach Wellington

BRONZE SPONSORS

North & South

Coast FM

Minter Ellison Rudd Watts

ZM

ACNielsen

The Todd Corporation

AMP

Allied Domecq Wines (NZ) Ltd.

Smokefree Arts

The information in this brochure is correct at the time of publication. The Festival reserves the right to alter without notice any events, programmes and artists.

The Telecom Season of

Eraritjaritjaka

Théâtre Vidy-Lausanne - Heiner Goebbels

An international hit, this European theatre work offers "... one of the most mind bogglingly brilliant feats of hi-tech appropriation of sound and vision you're ever likely to witness" (*The Herald*, Edinburgh).

OPENS TONIGHT

When: Fri 24 - Sun 26 Feb, 7.30pm
Sun 26 Feb, 1.30pm

Where: Opera House



Sponsored by

Telecom
Communications Provider

With support from PRO HELVETIA
- Arts Council of Switzerland, the
German Embassy Wellington and the
Royal Netherlands Embassy.

Welcome to the 2006 New Zealand International Arts Festival.

This is your guide to 24 days of indulgence, a navigational tool to help you make the most of your Festival. Immerse yourself in it – see actors spin enchanted stories, dancers make magic, or people fly through the air above you. Listen to writers tell tall tales, singers' voices soar on; for the funkiest sounds, head to The National Bank Festival Club. Take a walk on the wild side, step outside your comfort zone and make the most of having the world's leading artists right here in Wellington.

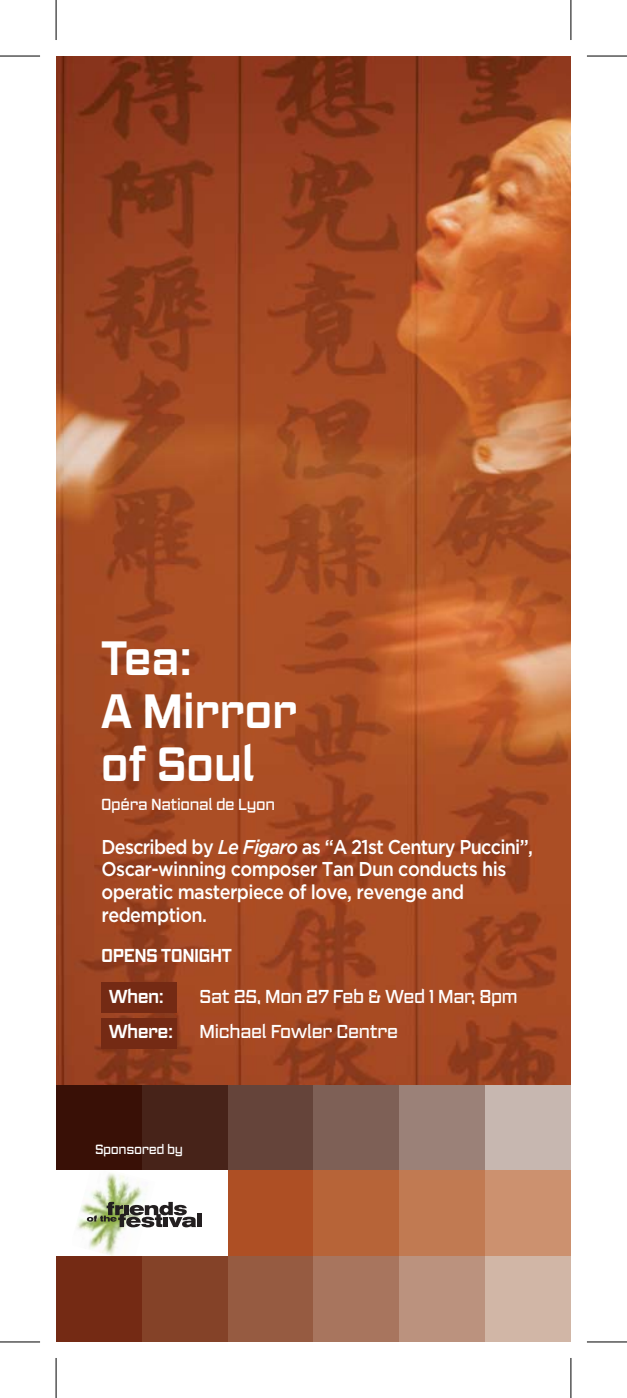
Fri 24 Feb

- 24 hrs** Proudly Supported by SKYCITY
Earth from Above
Waitangi Park (FREE)
- 6.30pm** The New Zealand Post Season of
Les Arts Sauts
Waitangi Park
(\$45** and \$75)*
- 7.30pm** The Lexus Season of
The History Boys
(SOLD OUT)
- 7.30pm** The Telecom Season of
Eraritjaritjaka
Opera House
(\$36.50 to \$71.50)*
- 7.30pm** **King and Country**
(SOLD OUT)
- 9pm** **Mikelangelo and the
Black Sea Gentlemen**
The National Bank Festival Club
(\$40)*

For more information, see the full Festival programme brochure or go to www.nzfestival.telecom.co.nz

Book online or phone Ticketek 04 384 3840.

*A service fee will apply. ** Child price.



Tea: A Mirror of Soul

Opéra National de Lyon

Described by *Le Figaro* as “A 21st Century Puccini”, Oscar-winning composer Tan Dun conducts his operatic masterpiece of love, revenge and redemption.

OPENS TONIGHT

When: Sat 25, Mon 27 Feb & Wed 1 Mar, 8pm

Where: Michael Fowler Centre

Sponsored by



Take it easy. Take the train to the Festival.
Tranz Metro.

25

Sat 25 Feb

- 24 hrs** Proudly Supported by SKYCITY
Earth from Above
Waitangi Park (FREE)
- 1pm** **A Capital Celebration (Picnic)**
Waitangi Park (FREE)
- 1.30pm** The Lexus Season of
The History Boys
Westpac St James Theatre
(SOLD OUT)
- 7.30pm** The Lexus Season of
The History Boys
Westpac St James Theatre
Waitangi Park
(SOLD OUT)
- 7.30pm** The Telecom Season of
Eraritjaritjaka
Opera House (\$36.50 to \$71.50)*
- 7.30pm** **King and Country**
Downstage Theatre (\$35 and \$40)*
- 8pm** **Tea: A Mirror of Soul**
Michael Fowler Centre (\$45 to \$165)*
- 8pm** The Bruce Bornholdt Season of
Dr Buller's Birds
Circa Theatre (\$43)*
- 8pm** The New Zealand Post Season of
Les Arts Sauts
SOLD OUT
- 8pm** **Antonio Forcione**
The National Bank Festival Club (\$40)*
- 10.30pm** **Mikangelo and the
Black Sea Gentlemen**
The National Bank Festival Club (\$40)*

For more information, see the full Festival programme brochure or go to www.nzfestival.telecom.co.nz
Book online or phone Ticketek 04 384 3840.

*A service fee will apply. **Child price.



A photograph of an aerial trapeze performer in a dynamic pose, suspended from a complex metal rig. The performer is wearing a light-colored, possibly white, outfit. The background is dark, with purple and blue stage lights illuminating the scene. The rig consists of various bars and cables, some of which are lit up.

The New Zealand Post Season of
Les Arts Sauts

"...magicians of the air gratify us with the greatest aerial trapeze show one can imagine."

(*Le Dauphiné Libéré, France*)

© Philippe Cibille

When:

Fri 24 Feb, Wed 1, Thu 2, Wed 8, Thu 9,
Wed 15 & Thu 16 Mar, 6.30pm
Sat 25 Feb, Fri 3, Sat 4, Fri 10, Sat 11,
Fri 17 & Sat 18 Mar, 8pm
Sun 26 Feb, Sun 5, Sun 12 & Sun 19 Mar, 5pm

Where:

Waitangi Park

Sponsored by

New Zealand Post 

With support from Association Française
d'Action Artistique/Ministère des Affaires
étrangères. Presented in association with
Arts Projects Australia.

Take it easy. Take the train to the Festival.
Tranz Metro.

Sun 26 Feb

26

- 24 hrs** Proudly Supported by SKYCITY
Earth from Above
Waitangi Park (FREE)
- 1pm** **Jan Preston**
The National Bank Festival Club
(SOLD OUT)
- 1.30pm** The Telecom Season of
Eraritjaritjaka
Opera House (\$36.50 to \$71.50)*
- 4pm** The Bruce Bornholdt Season of
Dr Buller's Birds
Circa Theatre (\$43)*
- 5pm** The New Zealand Post Season of
Les Arts Sauts
Waitangi Park (\$45** and \$75)*
- 7pm** **NZSQ, Eight Colours**
St Mary of the Angels (\$50)*
- 7.30pm** The Lexus Season of
The History Boys
Westpac St James Theatre
(SOLD OUT)
- 7.30pm** The Telecom Season of
FINAL Eraritjaritjaka
Opera House (\$36.50 to \$71.50)*
- 7.30pm** **King and Country**
Downstage Theatre (\$35 and \$40)*
- 8pm** **Antonio Forcione Quartet**
The National Bank Festival Club (\$40)*
- 10.30pm** **Mikangelo and the**
FINAL Black Sea Gentlemen
The National Bank Festival Club (\$40)*

For more information, see the full Festival programme brochure or go to www.nzfestival.telecom.co.nz
Book online or phone Ticketek 04 384 3840.

*A service fee will apply. **Child price.



Heart in Voh, New Caledonia, France S 20° 57' E 164° 41' © Yann Arthus-Bertrand/www.yannarthusbertrand.org

Proudly Supported by SKYCITY

Earth from Above

Yann-Arthus Bertrand
An Aerial Portrait of our Planet
Towards a Sustainable Development

When: Opens 24 Feb "The most amazing pictures you'll ever see." (*Daily Mail*, UK)

Where: Waitangi Park



Sponsored by

With support from The Community Trust of Wellington and Wellington City Council. Under the patronage of UNESCO and with the generous support of FujiFilm, Air France, Eurocopter and the Institut Géographique National-France.

King and Country

27

"This innovative combination of home-grown Kiwi reminiscing and local musical expertise... reached both mind and heart." *(The Press)*

When: Fri 24 Feb - Wed 1 Mar 7.30pm

Where: Downstage Theatre

Sponsored by



With support from Creative New Zealand.

Mon 27 Feb

24 hrs Proudly Supported by SKYCITY
Earth from Above
Waitangi Park (**FREE**)

6.30pm The Lexus Season of
The History Boys
Westpac St James Theatre
(SOLD OUT)

7.30pm **King and Country**
Downstage Theatre
(\$35 and \$40)*

8.00pm **Tea: A Mirror of Soul**
Michael Fowler Centre
(\$45 to \$165)*

*A service fee will apply. **Child price.





Orchestra of the Age of Enlightenment

When: Tue 28 Feb 8
Wed 1 Mar, 7.30pm

Where: Town Hall

Hear music as the old masters intended, as this world famous 45-piece orchestra brings classics from Vivaldi to Mozart to life. "Never have I heard an orchestra fizz at such speed, energy or accuracy" (*The Independent, UK*).



The National Bank Festival Club

Pumping with the sounds of cool country, wild guitar and hot African rhythms, The National Bank Festival Club is the heart of the Festival. International highlights include American alt-country stars **Over the Rhine**, Guinean quartet Ba Cissoko and Italian guitarist extraordinaire Antonio Forcione.

Flip to centre for more club gigs

Sponsored by



The National Bank

Take it easy. Take the train to the Festival.
Tranz Metro.

Tue 28 Feb

- 24 hrs** Proudly Supported by SKYCITY
Earth from Above
Waitangi Park (FREE)
- 12.10pm** **Aroha String Quartet**
The National Bank Festival Club
(\$20)*
- 6.30pm** The Lexus Season of
FINAL The History Boys
Westpac St James Theatre
(SOLD OUT)
- 6.30pm** The Bruce Bornholdt Season of
Dr Buller's Birds
Circa Theatre
(\$43)*
- 7.30pm** **The Orchestra of the
Age of Enlightenment**
Town Hall
(\$45 to \$95)*
- 7.30pm** **King and Country**
Downstage Theatre
(\$35 and \$40)*
- 8pm** **Antonio Forcione Quartet**
The National Bank Festival Club
(\$40)*

28

For more information, see the full Festival programme brochure or go to www.nzfestival.telecom.co.nz
Book online or phone Ticketek 04 384 3840.

*A service fee will apply. **Child price.

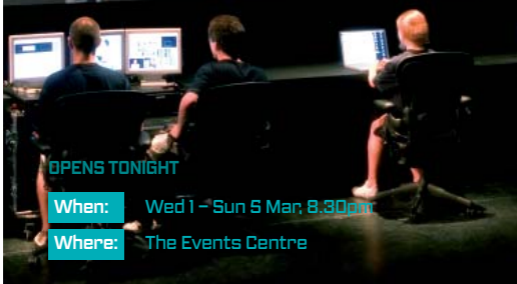


The Clemenger BBDO Season of

Super Vision

The Builders Association & dbox

Identity theft, information anxiety and data addiction are science fiction no more. Cross-media theatre work *Super Vision* is a stunning and provocative exploration of life in the age of digital surveillance. "This show hypnotises..." (*Variety*, US).



OPENS TONIGHT

When: Wed 1 – Sun 5 Mar, 8.30pm

Where: The Events Centre

Sponsored by

CLEMENGER BBDO

Take it easy. Take the train to the Festival.
Tranz Metro.

Wed 1 Mar

- 24 hrs** Proudly Supported by SKYCITY
Earth from Above
Waitangi Park (FREE)
- 1.15pm** **Living Composers Seminar**
The National Bank Festival Club (FREE)
- 6.30pm** The New Zealand Post Season of
Les Arts Sauts
Waitangi Park
(\$45** and \$75)*
- 6.30pm** The Bruce Bornholdt Season of
Dr Buller's Birds
Circa Theatre
(\$43)*
- 7.30pm** **Orchestra of the Age of Enlightenment**
Town Hall
(\$45 to \$95)*
- 7.30pm** **King and Country**
FINAL Downstage Theatre
(\$35 and \$40)*
- 8pm** **Tea: A Mirror of Soul**
FINAL Michael Fowler Centre
(\$45 to \$165)*
- 8pm** **Antonio Forcione Quartet**
The National Bank Festival Club
(\$40)*
- 8.30pm** The Clemenger BBDO Season of
Super Vision
The Events Centre
(\$45 to \$65)*

For more information, see the full Festival programme brochure or go to www.nzfestival.telecom.co.nz
Book online or phone Ticketek 04 384 3840.

*A service fee will apply. **Child price.



Bright Abyss

James Thiérrée

Theatre, dance and circus arts fuse in this highly imaginative spectacle that will blow you away.

“So thrilling I could barely stay in my seat”

(Independent on Sunday, UK).

OPENS TONIGHT

When: Thu 2- Sat 4 & Mon 6 Mar; 7pm
Sun 5 Mar; 4pm

Where: Westpac St James Theatre



© Richard Haughton

With support from Association Française d'Action Artistique/Ministère des Affaires étrangères.

Take it easy. Take the train to the Festival.
Tranz Metro.

Thu 2 Mar

- 24 hrs** Proudly Supported by SKYCITY
Earth from Above
Waitangi Park (FREE)
- 1.15pm** **The Director's Vision Seminar**
The National Bank Festival Club (FREE)
- 6pm** **New Zealand Art and the European Tradition** (Lecture)
Te Papa (FREE)
- 6.30pm** The New Zealand Post Season of
Les Arts Sauts
Waitangi Park
(\$45** and \$75)*
- 7pm** **Bright Abyss**
Westpac St James Theatre
(\$15.50** to \$69.50)*
- 7.30pm** **Battalion**
Genesis Energy Theatre at Expressions
(\$22)* For bookings ph: 04 527 2168
- 8pm** The Bruce Bornholdt Season of
Dr Buller's Birds
Circa Theatre
(\$43)*
- 8pm** **Antonio Forcione Quartet**
FINAL The National Bank Festival Club
(\$40)*
- 8.30pm** The Clemenger BBDO Season of
Super Vision
The Events Centre
(\$45 to \$65)*
- 10.30pm** **Fat Freddy's Drop**
The National Bank Festival Club
(SOLD OUT)

*A service fee will apply. **Child price.



The TV3 Season of

Tristan & Yseult

Kneehigh Theatre and National Theatre

You'll fall in love with Cornwall's "oldest and greatest story", brought crashing into the 21st century with a live jazz band and comic chorus of 'lovespotters'. "It made me want to gurgle with delight" (*The Guardian, UK*).

OPENS TONIGHT

When: Fri 3, Sun 5, Mon 6 and Tue 7 Mar, 7pm
Sat 4 Mar, 2pm & 8pm

Where: Opera House

Sponsored by



Take it easy. Take the train to the Festival.
Tranz Metro.


Fri 3 Mar

- 24 hours** Proudly Supported by SKYCITY
Earth from Above
Waitangi Park (FREE)
- 7pm** **Bright Abyss**
Westpac St James Theatre
(\$15.50** to \$69.50)*
- 7pm** The TV3 Season of
Tristan & Yseult
Opera House (\$36.50 to \$66.50)*
- 7.30pm** **Antonio Forcione**
Pataka Museum, Porirua (\$30)*
- 7.30pm** **King and Country**
Masterton Town Hall, Wairarapa
(\$30)*
- 8pm** **Zeibekiko**
Town Hall (\$25 to \$55)*
- 8pm** The Bruce Bornholdt Season of
Dr Buller's Birds
Circa Theatre (\$43)*
- 8pm** The New Zealand Post Season of
Les Arts Sauts
Waitangi Park (\$45** and \$75)*
- 8pm** **The Songs of Kurt Weill**
The National Bank Festival Club (\$40)*
- 8.30pm** The Clemenger BBDO Season of
Super Vision
The Events Centre (\$45 to \$65)*
- 10.30pm** **Fat Freddy's Drop**
The National Bank Festival Club
(SOLD OUT)

For more information, see the full Festival programme brochure or go to www.nzfestival.telecom.co.nz
Book online or phone Ticketek 04 384 3840.

*A service fee will apply. **Child price.





Māori Showbands - Taking on the World

The Māori Volcanics and master of ceremonies Frankie Stevens headline this special tribute to the Māori showbands in a celebration created especially for the Festival.

OPENS TONIGHT

When: Sat 4 & Sun 5 Mar, 8pm

Where: Town Hall

Sponsored by  **TRANSPOWER**

With support from Te Waka Toi Creative New Zealand

© Nuki Waaka

Toyota Picnics in the Park

Get a taste of the Festival for free at one of these family-friendly picnics in Waitangi Park.

When: Sat 4 & Sat 18 Mar, 1-4pm

Where: Waitangi Park

 **TOYOTA | everyday**

With support from New Zealand Community Trust



Take it easy. Take the train to the Festival.
Tranz Metro.

Sat 4 Mar

- 24 hrs** Proudly Supported by SKYCITY
Earth from Above
Waitangi Park (**FREE**)
- 11am** **James Campbell's Comedy 4 Kids**
The National Bank Festival Club
(SOLD OUT)
- 1pm** **Toyota Picnic in the Park**
Waitangi Park (**FREE**)
- 2pm** **James Campbell's Comedy 4 Kids**
Pataka Museum, Porirua (\$10** and \$15)*
- 2pm** The TV3 Season of **Tristan & Yseult**
Opera House (\$36.50 to \$66.50)*
- 4pm** **King and Country**
Masterton Town Hall, Wairarapa (\$30)*
- 5pm** **James Campbell's Comedy 4 Kids**
Genesis Energy Theatre at Expressions
(\$12** and \$17)*
For bookings ph: 04 527 2168
- 7pm** **Bright Abyss**
Westpac St James Theatre
(\$15.50** to \$69.50)*
- 8pm** **Māori Showbands**
Town Hall (\$40 to \$60)*
- 8pm** The TV3 Season of **Tristan & Yseult**
Opera House (\$36.50 to \$66.50)*
- 8pm** **Aarero Stone**
Soundings Theatre (\$45)*
- 8pm** The Bruce Bornholdt Season of
Dr Buller's Birds
Circa Theatre (\$43)*
- 8pm** The New Zealand Post Season of
Les Arts Sauts
Waitangi Park (\$45** and \$75)*
- 8pm** **The Sharon Shannon Band**
The National Bank Festival Club (\$40)*
- 8.30pm** The Clemenger 8800 Season of
Super Vision
The Events Centre (\$45 to \$65)*
- 10.30pm** **Fat Freddy's Drop**
The National Bank Festival Club
(SOLD OUT)
FINAL

*A service fee will apply. **Child price.



CLOSE ENCOUNTERS

Taonga whakairo
(carved treasures) at Te Papa



Wakahuia (detail), mid 1800s, Museum of New Zealand Te Papa Tongarewa

This is an opportunity to see some exceptional carved taonga – some being shown in public for the first time – and hear their stories. In a series of lunchtime presentations, leading māori curators, carvers, and artists will show these exquisite carvings and share their knowledge and expertise on the tradition that is whakairo.

12.15pm – 1.00pm

Thursdays and Fridays

during the Festival –

2, 3, 9, 10, 16, 17, 23, 24 March

The Marae, Level 4.

Free entry.



Take it easy. Take the train to the Festival.
Tranz Metro.

Sun 5 Mar

- 24 hrs** Proudly Supported by SKYCITY
Earth from Above
Waitangi Park (FREE)
- 11am** **James Campbell's Comedy 4 Kids**
The National Bank Festival Club
(SOLD OUT)
- 1pm** **Aarero Stone**
Soundings Theatre (\$45)*
- 1pm** **Colin Hemmingsen**
The National Bank Festival Club (\$20)*
- 4pm** **Bright Abyss**
Westpac St James Theatre
(\$15.50** to \$69.50)*
- 4pm** The Bruce Bornholdt Season of
Dr Buller's Birds
Circa Theatre (\$43)*
- 5pm** The New Zealand Post Season of
Les Arts Sauts
Waitangi Park (\$45** and \$75)*
- 7pm** The TV3 Season of
Tristan & Yseult
Opera House (\$36.50 to \$66.50)*
- 7pm** **Aarero Stone**
Soundings Theatre (\$45)*
- 8pm** **The Sharon Shannon Band**
The National Bank Festival Club (\$40)*
- 8pm** **Māori Showbands**
Town Hall (\$40 to \$60)*
- 8.30pm** The Clemenger BBDO Season of
FINAL Super Vision
The Events Centre (\$45 to \$65)*

For more information, see the full Festival programme brochure or go to www.nzfestival.telecom.co.nz
Book online or phone Ticketek 04 384 3840.

*A service fee will apply. **Child price.



Ticketek Outlets

- 5 Embassy Theatre (14 Feb-19 Mar only)
- 6 The Events Centre
- 7 Michael Fowler Centre
- 10 Opera House
- 16 Thorndon New World
- 17 Tourism & Information Centre, Cable Car Lane
- 13 Waitangi Park (24 Feb-19 Mar only)
- 15 Westpac St James Theatre

To Upper Hutt, The Dowse (Hutt City), Pataka Museum (Porirua), Mahara Gallery (Waikanae), Kapiti Coast





Map B

Festival Venues

- 1** Adam Art Gallery
- 2** Circa Theatre
- 3** City Gallery
- 4** Downstage Theatre
- 5** Embassy Theatre
- 6** The Events Centre
- 7** Michael Fowler Centre
- 8** Museum of Wellington City and Sea
- 9** The National Bank Festival Club
- 10** Opera House
- 11** St Mary of the Angels
- 12** Te Papa/Soundings Theatre
- 13** Waitangi Park / Les Arts Sauts Big Top
- 14** Wellington Town Hall
- 15** Westpac St James Theatre

- | | |
|------------------------------|--------------------------|
| P Parking | F Festival Office |
| i Tourist Information | T Taxi Ranks |

For accommodation and tourist information, visit WellingtonNZ.com

To Airport

ACT ONE



MEET AT THE JIMMY CAFÉ
AT THE WESTPAC ST JAMES
THEATRE FOR A FESTIVAL
TREAT



LUSCIOUS PLATTERS
WITH NO RUSH

Browse our platter selection in
detail on www.stjames.co.nz

To pre-order call
802 6930 or 802 6931

Email starexperience@stjames.co.nz



The National Bank

The National Bank Festival Club Selections



A fantastical re-imagining of Eastern European music and culture, Mikelangelo and the Black Sea Gentlemen take the audience on a voyage into their dark and mysterious gypsy world. Part-ringmaster, part-crooner, part-beast-possessed, Mikelangelo commands the stage with his thunderous baritone. Like the fragments of some half-remembered dream, this boldly original group plays out a musical melodrama of epic proportions.

When: Fri 24 Feb, 9pm;
Sat 25 & 26 Feb; 10.30pm [\$40]



Hailed as the Jimi Hendrix of the acoustic guitar, Italian-born Antonio Forcione pushes the boundaries of modern guitar playing styles, whether it be jazz, Spanish, African or Brazilian. He is joined by Jenny Adejayan (Nigeria) on cello, Adriano Pinto (Brazil) on percussion and Igor Outkine (Russia) on accordion in a passionate - and humorous - musical celebration of the unexpected elements in life.

When: Sat 25, Sun 26, Tue 28 Feb,
Wed 1 & Thu 2 Mar; 8pm [\$40]



The Songs of Kurt Weill

These are not your average love songs. Dealing with murder, prostitution and political corruption, the songs of German-born Kurt Weill explore the darker side of life. Weill was one of the most accomplished theatre composers of the 20th century, best known for penning "Mack the Knife". This will be a dramatic night of cabaret from some of New Zealand's most versatile and innovative talent.

When: Fri 3 Mar, Tue 14 Mar; 8pm [\$40]



The Sharon Shannon Band

Fans of all things Irish are in for a treat as 'Queen of the squeezebox' Sharon Shannon joins innovative flute player and piper Michael McGoldrick in a series of special concerts. Along with guitarist Jim Murray and fiddle-player Dezi Donnelly, the Sharon Shannon Band will be playing tunes from Sharon and Michael's back catalogue, as well as new arrangements written especially for the tour.

When: Sat 4 Mar, Sun 5 Mar; 8pm [\$40]



With an infectious sound driven by the distinctive kora (21-string African harp), Ba Cissoko is a trail-blazing quartet of young Guinean artists currently making their mark on the world music scene with a vibrant fusion of rock and reggae. The band injects age-old Mandingo songs with an urban edge, combining traditional sounds with deep vocals, grooving bass lines and virtuosic percussion skills.

When: Wed 15 Mar; Thu 16 Mar;
Fri 17 & Sat 18 Mar; 8pm [\$40]



Inspired by the mid-West and the urban American heartland, alt-country band Over the Rhine combines stunning torch-song vocals with guitars to conjure up images of midnight cruises through deserted Edward Hopper streets. Bergquist's soulful voice provides the unmistakable focal point for their hushed and heart-rending songs of love, faith, doubt and joy. Catch this hot band on their way to international stardom.

When: Thu 9 Mar; Fri 10 Mar; Sat 11 Mar &
Sun 12 Mar; 8pm [\$40]



The Phoenix Foundation



Enjoy perfectly crafted pop gems by two of New Zealand's most loved bands in the sublime surrounds of the National Bank Festival Club. In 2005, The Phoenix Foundation were nominated for best album at the Vodafone NZ Music Awards for the second year running, while Goldenhorse's were nominated for Best Group.

Goldenhorse

When: Thu 9 Mar; 10.30pm [\$40]
Fri 10 Mar [SOLD OUT]

The Phoenix Foundation

When: Sat 11 Mar; 10.30pm



For a Festival lunch break to remember, head to the National Bank Festival Club on Tuesdays for one-off concerts by the Aroha String Quartet, TOWER New Zealand Youth Choir or the New Zealand Trio. Indulge in an hour long Festival experience that will inspire your heart and brighten your day for just \$20.

Aroha String Quartet: Tue 28 Feb; 12.10pm [\$20]

TNZYC: Tue 7 Mar; 12.10pm [\$20]

NZ Trio : Tue 14 Mar; 12.10pm [\$20]

Visual Arts

Pacific Pattern: *Photographs by Glenn Jowitt*

Presented by The Dowse

Where: Westpac St James Theatre,
77-87 Courtenay Place

When: 17 Feb-26 Mar

Hours: Open during the day and until late
on show nights. (FREE)

Innocents Abroad:

Touring the Pacific Through a Colonial Lens

Where: Museum of Wellington City & Sea
Queens Wharf

When: Opens Wed 22 Feb

Hours: Open daily, 10am-5pm (FREE)

Contemporary New Zealand Photographers

Where: Pataka - Cnr Norrie St & Parumoana St,
Porirua

When: Opens Mon 6 Feb

Hours: Mon-Sat 10am-4.30pm
Sun 11am-4.30pm (FREE)

Patricia Piccinini: *Nature's Little Helpers*

Where: City Gallery Wellington - Civic Square

When: Opens Sun 19 Feb

Hours: 10am-5pm (FREE)

Ko Tawa: *Taanga from our Ancestral Landscapes*

Where: Pataka - Cnr Norrie St & Parumoana St,
Porirua

When: Opens Wed 1 Mar

Hours: Mon-Sat 10am-4.30pm
Sun 11am-4.30pm (FREE)

Islanded: *Contemporary art from New Zealand, Singapore and Taiwan*

Where: Adam Art Gallery
Victoria University of Wellington

When: Opens 24 Feb

Hours: Tue-Sun 11am-5pm (FREE)

Subjects to Hand:

Joanna Margaret Paul Drawing

Where: Mahara Gallery - Mahara Place,
Waikanae

When: Opens Sun 5 Mar

Hours: Mon-Sat 10am-4pm,
Sun 1pm-4pm (FREE)

Cuba Mall Disartster

Where: Cuba Mall

When: During the Festival
Check www.johnradford.co.nz
for info and updates

Len Lye's Water Whirler

Where: Frank Kitts Park

When: During the Festival

Shapeshifter 2006

Where: Frederic Wallis House grounds,
Lower Hutt

When: Sat 4 Mar-Sun 12 Mar

Hours: 10am-4pm (Adult \$10, Children free)*

Close Encounters: *Taonga Whakairo*

[Carved Treasures] at Te Papa

Where: The Marae, Level 4, Te Papa - Cable St

When: Thu 2, Fri 3, Thu 9, Fri 10, Thu 16, Fri 17,
Thu 23 & Fri 24 Mar

Hours: 12.15pm-1pm (FREE)

Mon 6 Mar

6

24 hrs Proudly Supported by SKYCITY

Earth from Above

Waitangi Park (FREE)

7pm **King and Country**

Southwards Theatre, Paraparaumu
(\$30)*

7pm **Bright Abyss**

FINAL

Westpac St James Theatre
(\$15.50** to \$69.50)*

7pm The TV3 Season of

Tristan & Yseult

Opera House (\$36.50 to \$66.50)*

7pm **Aarero Stone**

Soundings Theatre (\$45)*

*A service fee will apply. **Child price.



Take it easy. Take the train to the Festival.
Tranz Metro.

Tue 7 Mar

- 24 hrs** Proudly Supported by SKYCITY
Earth from Above
Waitangi Park (FREE)
- 12.10pm** **TOWER New Zealand Youth Choir**
The National Bank Festival Club
(\$20)*
- 6.30pm** The Bruce Bornholdt Season of
Dr Buller's Birds
Circa Theatre
(\$43)*
- 7pm** The TV3 Season of
FINAL Tristan & Yseult
Opera House
(\$36.50 to \$66.50)*
- 7pm** **Aarero Stone**
Soundings Theatre
(\$45)*
- 7.30pm** **Battalion**
Hosanna Fellowship Hall,
Cannons Creek
(\$20)*
- 8pm** **Don McGlashan**
The National Bank Festival Club
(SOLD OUT)

7

For more information, see the full Festival programme brochure or go to www.nzfestival.telecom.co.nz
Book online or phone Ticketek 04 384 3840.

*A service fee will apply. **Child price.





Orchestra Baobab

"There is no way you won't fall in love with the Orchestra's exquisite ripple of guitars... gorgeous." *(Independent on Sunday, UK)*

TONIGHT ONLY

When: Wed 8 Mar, 8pm

Where: Town Hall

Presented in association with Arts Projects Australia.



Page 8

Company B Belvoir St Theatre

"...beautifully crafted and wonderfully performed..."
(Sydney Morning Herald)

OPENS TONIGHT

When: Wed 8-Fri 10 Mar, 6.30pm
Sat 11 Mar, 2pm, Sat 11 Mar,
8pm, Sun 12 Mar, 4pm

Where: Downstage Theatre

Sponsored by ACNielsen

Take it easy. Take the train to the Festival.
Tranz Metro.

Wed 8 Mar

- 24 hrs** Proudly Supported by SKYCITY
Earth from Above
Waitangi Park (FREE)
- 1.15pm** **New Zealand Theatre Seminar**
The National Bank Festival Club
(FREE)
- 6.30pm** The Bruce Bornholdt Season of
Dr Buller's Birds
Circa Theatre
(\$43)*
- 6.30pm** The New Zealand Post Season of
Les Arts Sauts
Waitangi Park
(\$45** and \$75)*
- 6.30pm** **Page 8**
Downstage Theatre
(\$35 and \$45)*
- 8pm** **Orchestra Baobab**
Town Hall
(\$45 to \$65)*
- 8pm** **Eva**
Opera House
(\$46.50 to \$71.50)*
- 8pm** **Aarero Stone**
FINAL Soundings Theatre
(\$45)*
- 8pm** **Don McGlashan**
The National Bank Festival Club
(SOLD OUT)

For more information, see the full Festival programme brochure or go to www.nzfestival.telecom.co.nz
Book online or phone Ticketek 04 384 3840.

*A service fee will apply. **Child price.



Eva

Ballet Flamenco Eva Verbabuena

Be seduced by the sounds of Seville. Spain's first lady of Flamenco presents a night of sensual and sultry dance with her company of dancers and flamenco band.

When:

Wed 8 Mar - Sat 11 Mar, 8pm
Sat 11 Mar, 2pm, Sun 12 Mar, 6.30pm

Where:

Opera House



Sponsored by The Todd Corporation

Take it easy. Take the train to the Festival.
Tranz Metro.

Thu 9 Mar

- 24 hrs** Proudly Supported by SKYCITY
Earth from Above
Waitangi Park (FREE)
- 1.15pm** **Indigenous Voices Seminar**
The National Bank Festival Club
(FREE)
- 6pm** **McCahon** (Lecture)
Te Papa (FREE)
- 6.30pm** The New Zealand Post Season of
Les Arts Sauts
Waitangi Park
(\$45** and \$75)*
- 6.30pm** **Page 8**
Downstage Theatre
(\$35 and \$45)*
- 7.30pm** **Battalion**
Otaki College Hall, Otaki
(\$20)*
- 8pm** The Bruce Bornholdt Season of
Dr Buller's Birds
Circa Theatre
(\$43)*
- 8pm** **Eva**
Opera House
(\$46.50 to \$71.50)*
- 8pm** **Over the Rhine**
The National Bank Festival Club
(\$40)*
- 10.30pm** **Goldenhorse**
The National Bank Festival Club
(\$40)*

For more information, see the full Festival programme brochure or go to www.nzfestival.telecom.co.nz
Book online or phone Ticketek 04 384 3840.

*A service fee will apply. **Child price.



The Holy Sinner

Inside Out Productions

Featuring

Cliff Curtis, Madeleine Sami and Mia Blake

With kings and cardinals, angels and lepers, foul-mouthed fisher folk and extravagant battle scenes, this landmark New Zealand theatre work is a truly epic medieval ride.

"I'd trade every play I've ever seen for it"

(New Zealand Herald).

OPENS TONIGHT

When: Fri 10- Sun 12 Mar, 8pm
Sun 12 Mar, 1pm, Mon 13 Mar, 7pm

Where: Westpac St James Theatre

© Fiona Pardington

Sponsored by



With support from Creative New Zealand

Take it easy. Take the train to the Festival.
Tranz Metro.

Fri 10 Mar

- 24 hours** Proudly Supported by SKYCITY
Earth from Above
Waitangi Park (**FREE**)
- 6.30pm** **Page 8**
Downstage Theatre
(\$35 and \$45)*
- 7pm** **NZSQ, Why the Night is Different**
St Mary of the Angels
(\$50)*
- 8pm** **The Holy Sinner**
Westpac St James Theatre
(\$36.50 to \$61.50)*
- 8pm** **Eva**
Opera House
(\$46.50 to \$71.50)*
- 8pm** The Bruce Bornholdt Season of
Dr Buller's Birds
Circa Theatre
(\$43)*
- 8pm** The New Zealand Post Season of
Les Arts Sauts
Waitangi Park
(\$45** and \$75)*
- 8pm** **Over the Rhine**
The National Bank Festival Club
(\$40)*
- 8.30pm** Proudly Sponsored by TV3
Instructions for Modern Living
Soundings Theatre
(\$40)*
- 10.30pm** **Goldenhorse**
The National Bank Festival Club
(SOLD OUT)

*A service fee will apply. **Child price.



The Dragons' Trilogy

Ex Machina - Robert Lepage

Coro Street meets Chinatown in this epic family saga that “shatters the limits of theatrical expression” (*New York Times*, US).

OPENS TONIGHT

When: Sat 11, Mon 13, Thu 16 & Fri 17 Mar, 5.30pm
Sun 12 & Sat 18 Mar, 3pm

Where: The Events Centre

© Erick Labbé

Sponsored by

Keep Up With
NewstalkZB
WELLINGTON • 1035AM

Take it easy. Take the train to the Festival.
Tranz Metro.

Sat 11 Mar

- 24 hrs** Proudly Supported by SKYCITY
Earth from Above
Waitangi Park (FREE)
- 1pm** **Upper Hutt Hoe-Down at Harcourt Park**
Harcourt Park (FREE)
- 2pm** **Eva**
Opera House (\$46.50 to \$71.50)*
- 2pm** **Page 8**
Downstage Theatre (\$35 and \$45)*
- 5.30pm** **The Dragons' Trilogy**
The Events Centre (\$70 and \$85)*
- 8pm** **James MacMillan Conducts**
Michael Fowler Centre (\$35 to \$80)*
- 8pm** **The Holy Sinner**
Westpac St James Theatre
(\$36.50 to \$61.50)*
- 8pm** **Eva**
Opera House (\$46.50 to \$71.50)*
- 8pm** **Page 8**
Downstage Theatre (\$35 and \$45)*
- 8pm** The Bruce Bornholdt Season of
Dr Buller's Birds
Circa Theatre (\$43)*
- 8pm** The New Zealand Post Season of
Les Arts Sauts
Waitangi Park (\$45** and \$75)*
- 8pm** **Over the Rhine**
The National Bank Festival Club (\$40)*
- 8.30pm** Proudly Sponsored by TV3
Instructions for Modern Living
Soundings Theatre (\$40)*
- 8.30pm** **Tuwhare**
Town Hall (\$40 to \$60)*
- 10.30pm** **The Phoenix Foundation**
The National Bank Festival Club (\$40)*

*A service fee will apply.

**Child price.



Tuwhare

A New Zealand International Arts Festival and
Toi Māori Aotearoa Production

“...a fantastic document of not only New Zealand
music but also New Zealand art and culture.”

(nzmusic.com)



When: Sat 11 – Mon 13 Mar, 8.30pm

Where: Town Hall

Sponsored by **THE DOMINION POST**

*With support from Creative New Zealand, Toi Māori Aotearoa
and Smokefree Arts*


Proudly Sponsored by TV3

Instructions for Modern Living

A moody and introspective ‘live music
time-capsule’ from writer Duncan Sarkies
and musician Nic McGowan.

When: Fri 10, Sat 11, Tue 14 & Wed 15 Mar, 8.30pm
Sun 12 and Mon 13 Mar, 6.30pm

Where: Soundings Theatre

Sponsored by 

With support from Creative New Zealand

Take it easy. Take the train to the Festival.
Tranz Metro.

Sun 12 Mar

- 24 hrs** Proudly Supported by SKYCITY
Earth from Above
Waitangi Park (FREE)
- 1pm** **The Holy Sinner**
Westpac St James Theatre
(\$36.50 to \$61.50)*
- 1pm** **Besser & Bravura**
The National Bank Festival Club (\$20)*
- 3pm** **Talk by Earth from Above
Photographer -
Yann Arthus-Bertrand**
The National Bank Festival Club (FREE)
- 3pm** **The Dragons' Trilogy**
The Events Centre (\$70 and \$85)*
- 4pm** **Page 8**
Downstage Theatre (\$35 and \$45)*
- 4pm** The Bruce Bornholdt Season of
Dr Buller's Birds
Circa Theatre (\$43)*
- 5pm** The New Zealand Post Season of
Les Arts Sauts
Waitangi Park (\$45** and \$75)*
- 6.30pm** **Eva**
Opera House (\$46.50 to \$71.50)*
- 6.30pm** Proudly Sponsored by TV3
Instructions for Modern Living
Soundings Theatre (\$40)*
- 8pm** **Pat Metheny**
Michael Fowler Centre (\$60 to \$95)*
- 8pm** **The Holy Sinner**
Westpac St James Theatre
(\$36.50 to \$61.50)*
- 8pm** **Over the Rhine**
The National Bank Festival Club (\$40)*
- 8.30pm** **Tuwhare**
Town Hall (\$40 to \$60)*

*A service fee will apply.

**Child price.



Talvin Singh

When: Tue 14 Mar, 9pm

Where: Opera House

"Talvin Singh takes the listener on a remarkable musical trip across a global landscape." (Mercury Award judges)

Sponsored by ZM

Mon 13 Mar

24 hrs Proudly Supported by SKYCITY
Earth from Above
Waitangi Park (**FREE**)

5.30pm **The Dragons' Trilogy**
The Events Centre (\$70 and \$85)*

6.30pm *Proudly Sponsored by TV3*
Instructions for Modern Living
Soundings Theatre (\$40)*

7pm **The Holy Sinner**
FINAL Westpac St James Theatre
(\$36.50 to \$61.50)*

8.30pm **Tuwhare**
FINAL Town Hall (\$40 to \$60)*

*A service fee will apply. **Child price.

13

Take it easy. Take the train to the Festival.
Tranz Metro.

Tue 14 Mar

- 24 hrs** Proudly Supported by SKYCITY
Earth from Above
Waitangi Park (FREE)
- 12.10pm** **NZ Trio**
The National Bank Festival Club
(\$20)*
- 6.30pm** The Bruce Bornholdt Season of
Dr Buller's Birds
Circa Theatre
(\$43)*
- 7pm** **Subramaniam**
St Mary of the Angels
(\$50)*
- 8pm** **Passio**
Town Hall
(\$40 to \$65)*
- 8pm** **The Songs of Kurt Weill**
The National Bank Festival Club
(\$40)*
- 8pm** **New Zealand Post Writers and
Readers Week Gala Opening**
Writers International
Embassy Theatre
(\$35)*
- 8.30pm** Proudly Sponsored by TV3
Instructions for Modern Living
Soundings Theatre
(\$40)*
- 9pm** **Talvin Singh**
Opera House
(\$29.50 to \$61.50)*

For more information, see the full Festival programme brochure or go to www.nzfestival.telecom.co.nz
Book online or phone Ticketek 04 384 3840.

*A service fee will apply. **Child price.



Aterballetto

Italy's foremost dance company fuses accomplished classical technique with fiery modern styles and an Italian zest for life.

OPENS TONIGHT

When: Wed 15 Mar, 7:30pm
Thu 16–Sat 18 Mar, 8pm
Sat 18 Mar, 2pm

Where: Westpac St James Theatre



Sponsored by

Stagecoach
WELLINGTON

Take it easy. Take the train to the Festival.
Tranz Metro.

Wed 15 Mar

- 24 hrs** Proudly Supported by SKYCITY
Earth from Above
Waitangi Park (FREE)
- 9am - 6pm** **New Zealand Post Writers and Readers Week**
Embassy Theatre
- 12.10pm** **New Zealand Post Writers and Readers Week Lunch Events**
The National Bank Festival Club
- 1.15pm** **Epic Dramas Seminar**
The National Bank Festival Club (FREE)
- 6pm** **Flashpoints: Robert Fisk**
Embassy Theatre (SOLD OUT)
- 6.30pm** The Bruce Bornholdt Season of
Dr Buller's Birds
Circa Theatre (\$43)*
- 6.30pm** The New Zealand Post Season of
Les Arts Sauts
Waitangi Park (\$45** and \$75)*
- 7pm** **Arkangelos**
St Mary of the Angels (SOLD OUT)
- 7.30pm** **Aterballetto**
Westpac St James Theatre
(\$36.50 to \$79.50)*
- 8pm** **Ba Cissoko**
The National Bank Festival Club (\$40)*
- 8.30pm** Proudly Sponsored by TV3
FINAL Instructions for Modern Living
Soundings Theatre (\$40)*

For more information, see the full Festival programme brochure or go to www.nzfestival.telecom.co.nz
Book online or phone Ticketek 04 384 3840.

*A service fee will apply. **Child price.



Its our **innovative**
innovative
thinking **thinking**
that makes us leading-edge.

Proud to support real creativity
at the New Zealand
International Arts
Festival



www.dtz.com/nz

International Property Advisers

Arts Encompassing 2006



25 February to 17 March

**Wellington Cathedral of St Paul
Molesworth Street**

All works for sale

Monday to Saturday 9 am to 5 pm

Sundays Noon to 4 pm

A superb collection of paintings,
pottery, sculpture, glass, crafts

Free entry

 **creative**
communities *NZ*

Sponsored by *Wellington City*

Take it easy. Take the train to the Festival.
Tranz Metro.

Thu 16 Mar

- 24 hrs** Proudly Supported by SKYCITY
Earth from Above
Waitangi Park (FREE)
- 9am - 6pm** **New Zealand Post Writers and Readers Week**
Embassy Theatre
- 12.10pm** **New Zealand Post Writers and Readers Week Lunch Events**
The National Bank Festival Club
- 1.15pm** **On the Decks Seminar**
The National Bank Festival Club (FREE)
- 5.30pm** **The Dragons' Trilogy**
The Events Centre (\$70 and \$85)*
- 6pm** **Flashpoints: Ronald Wright**
Embassy Theatre (\$18)*
- 6pm** **Taonga as Art: The Issues** (Lecture)
Te Papa (FREE)
- 6.30pm** The New Zealand Post Season of
Les Arts Sauts
Waitangi Park (\$45** and \$75)*
- 8pm** **Aterballetto**
Westpac St James Theatre
(\$36.50 to \$79.50)*
- 8pm** The Bruce Bornholdt Season of
Dr Buller's Birds
Circa Theatre (\$43)*
- 8pm** **Ba Cissoko**
The National Bank Festival Club
(\$40)*
- 10.30pm** **DJ Spooky Party**
The National Bank Festival Club
(\$55)*

*A service fee will apply. **Child price.





Proudly Sponsored
by Clemenger BBDO

DJ Spooky's Rebirth of a Nation

"A unique mixture of spicy critical theory,
well-spiced imagery, diced-up sound and raw
pieces of cultural meat." *(Artnet Magazine)*

When: Fri 17 & Sat 18 Mar, 8.30pm

Where: Opera House

DJ Spooky Party
ONE NIGHT ONLY

When: Thu 16 Mar, 10.30pm

Where: The National Bank Festival Club

© Tobin Poppenberg

Sponsored by

CLEMENGER BBDO

Take it easy. Take the train to the Festival.
Tranz Metro.

Fri 17 Mar

- 24 hours** Proudly Supported by SKYCITY
Earth from Above
Waitangi Park (FREE)
- 9am - 6pm** **New Zealand Post Writers and Readers Week**
Embassy Theatre
- 12.10pm** **New Zealand Post Writers and Readers Week Lunch Events**
The National Bank Festival Club
- 5pm** **Parsifal**
Michael Fowler Centre (\$25 to \$165)
- 5.30pm** **The Dragons' Trilogy**
The Events Centre (\$70 and \$85)*
- 6pm** **Flashpoints: Armand Marie Leroi**
Embassy Theatre (\$18)*
- 8pm** **Aterballetto**
Westpac St James Theatre
(\$36.50 to \$79.50)*
- 8pm** The Bruce Bornholdt Season of
Dr Buller's Birds
Circa Theatre (\$43)*
- 8pm** The New Zealand Post Season of
Les Arts Sauts
Waitangi Park (\$45** and \$75)*
- 8pm** **Ba Cissoko**
The National Bank Festival Club (\$40)*
- 8.30pm** Proudly Sponsored by Clemenger BBDO
DJ Spooky's Rebirth of a Nation
(\$29.50 to \$56.50)*
- 10.30pm** **Pitch Black**
The National Bank Festival Club
(\$40)*

*A service fee will apply. **Child price.





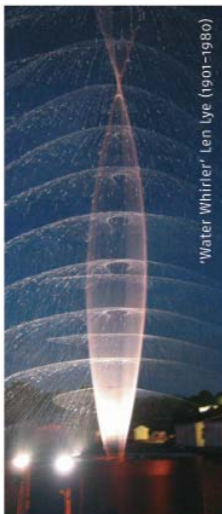
WWW.WELLINGTONWATERFRONT.CO.NZ

POSITIVELY

Wellington

Wellington Waterfront Ltd

WATERFRONT



'Water Whirler' Len Iye (1901-1980)

WORKING WITH THE WELLINGTON ARTS COMMUNITY SINCE LEN WAS A LAD

PROJECTS INCLUDE:

- Dominion Museum
- Wellington Library (later conversion to City Gallery)
- Michael Fowler Centre
- New City Library
- Te Papa
- Frank Kitts Park
- Waitangi Park
- 'Water Whirler' installation
- Embassy Theatre Upgrade

Fletcher
CONSTRUCTION

PRIDE OF PLACE : WWW.FLETCHERCONSTRUCTION.CO.NZ

Take it easy. Take the train to the Festival.
Tranz Metro.

Sat 18 Mar

- 24 hrs** Proudly Supported by SKYCITY
Earth from Above
Waitangi Park (FREE)
- 9am - 6pm** **New Zealand Post Writers and Readers Week**
Embassy Theatre
- 11am** **Brunch with Rick Gekoski and John Campbell**
The National Bank Festival Club
(\$50)*
- 1pm** **Toyota Picnic in the Park**
Waitangi Park (FREE)
- 2pm** **Aterballetto**
Westpac St James Theatre
(\$36.50 to \$79.50)*
- 3pm** **The Dragons' Trilogy**
FINAL The Events Centre (\$70 and \$85)*
- 8pm** **Aterballetto**
FINAL Westpac St James Theatre
(\$36.50 to \$79.50)*
- 8pm** The Bruce Bornholdt Season of
Dr Buller's Birds
Circa Theatre (\$43)*
- 8pm** The New Zealand Post Season of
Les Arts Sauts
Waitangi Park (\$45** and \$75)*
- 8pm** **Ba Cissoko**
FINAL The National Bank Festival Club (\$40)*
- 8.30pm** Proudly Sponsored by Clemenger BBDO
DJ Spooky's Rebirth of a Nation
(\$29.50 to \$56.50)*
- 10.30pm** **Late Night**
The National Bank Festival Club (\$40)*

*A service fee will apply. **Child price.



Sun 19 Mar

- 24 hrs** Proudly Supported by SKYCITY
Earth from Above
Waitangi Park (FREE)
- 10am - 4.30pm** **New Zealand Post Writers and Readers Week**
Embassy Theatre
- 3pm** **Parsifal**
Michael Fowler Centre
(\$25 to \$165)*
- 4pm** The Bruce Bornholdt Season of
FINAL Dr Buller's Birds
Circa Theatre (\$43)*
- 5pm** The New Zealand Post Season of
FINAL Les Arts Sauts
Waitangi Park
(\$45 and \$75)*

*A service fee will apply. **Child price.

*The bank that believes in
exceptional performance presents*

The National Bank Festival Club



Located at the heart of the New Zealand International Arts Festival at Waitangi Park, this spectacular venue will be the social hub of the Festival, hosting daily events, literary forums, musical performances and late night festivities.



The National Bank
The thoroughbred among banks

NBV 9838

THE NATIONAL BANK OF NEW ZEALAND,
PART OF ANZ NATIONAL BANK LIMITED.

Take it easy. Take the train to the Festival



TRM 2375

www.tranzmetro.co.nz